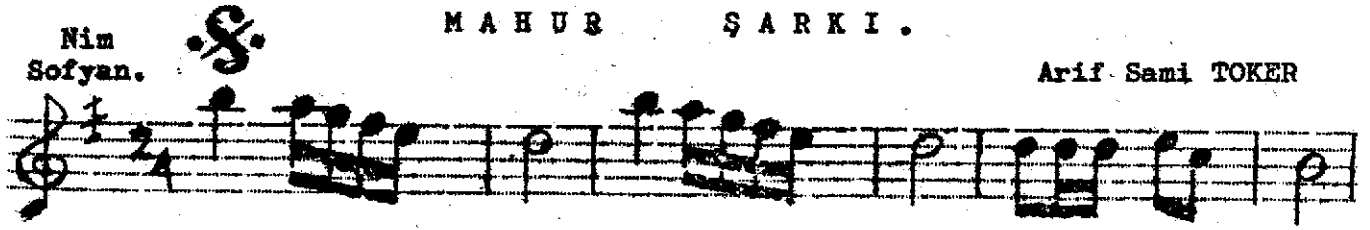


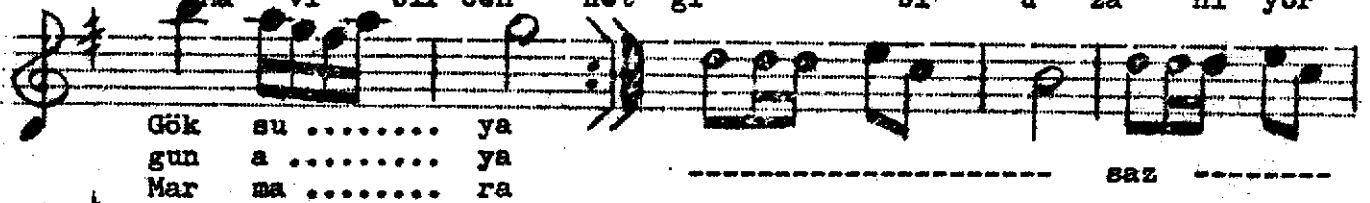
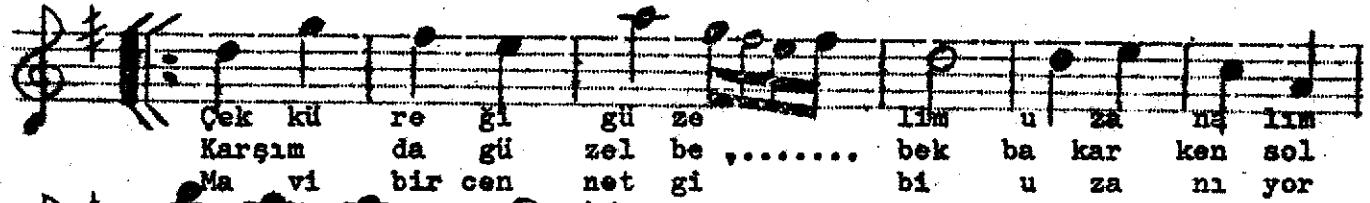
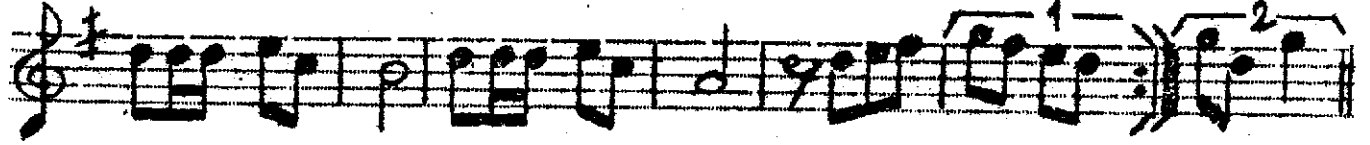
Nim  
Sofyan.

MAHUR ŞARKI.

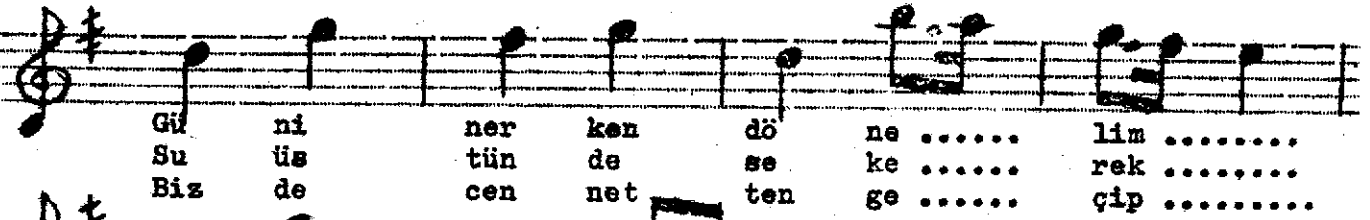
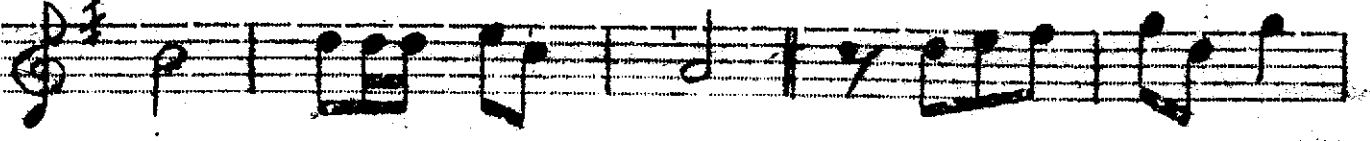
Arif Sami TOKER



Aranağme



Saz



Çek küreği güzelim uzanalım Göksuya  
Gün inerken dönelim süzülerek Modaya  
Karşımda güzel Bebek bakarken solgun aya  
Su üstünde sekerek süzülelim Göksuya  
Mavi bir cennet gibi uzanıyor Marmara